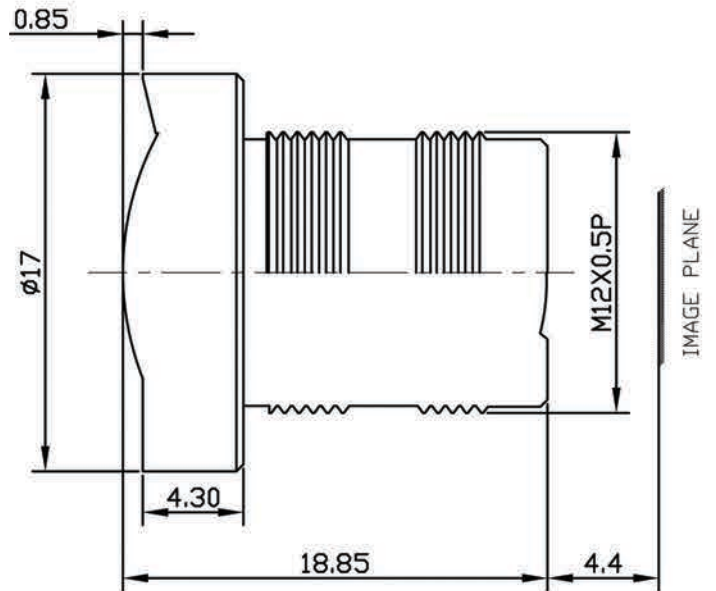


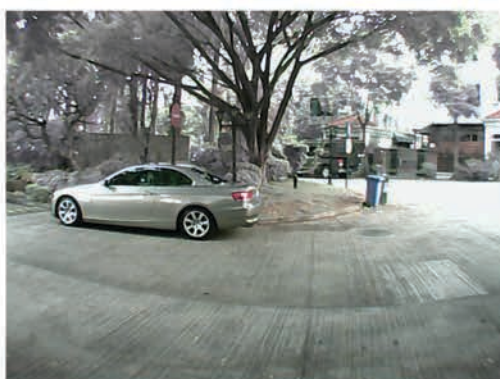
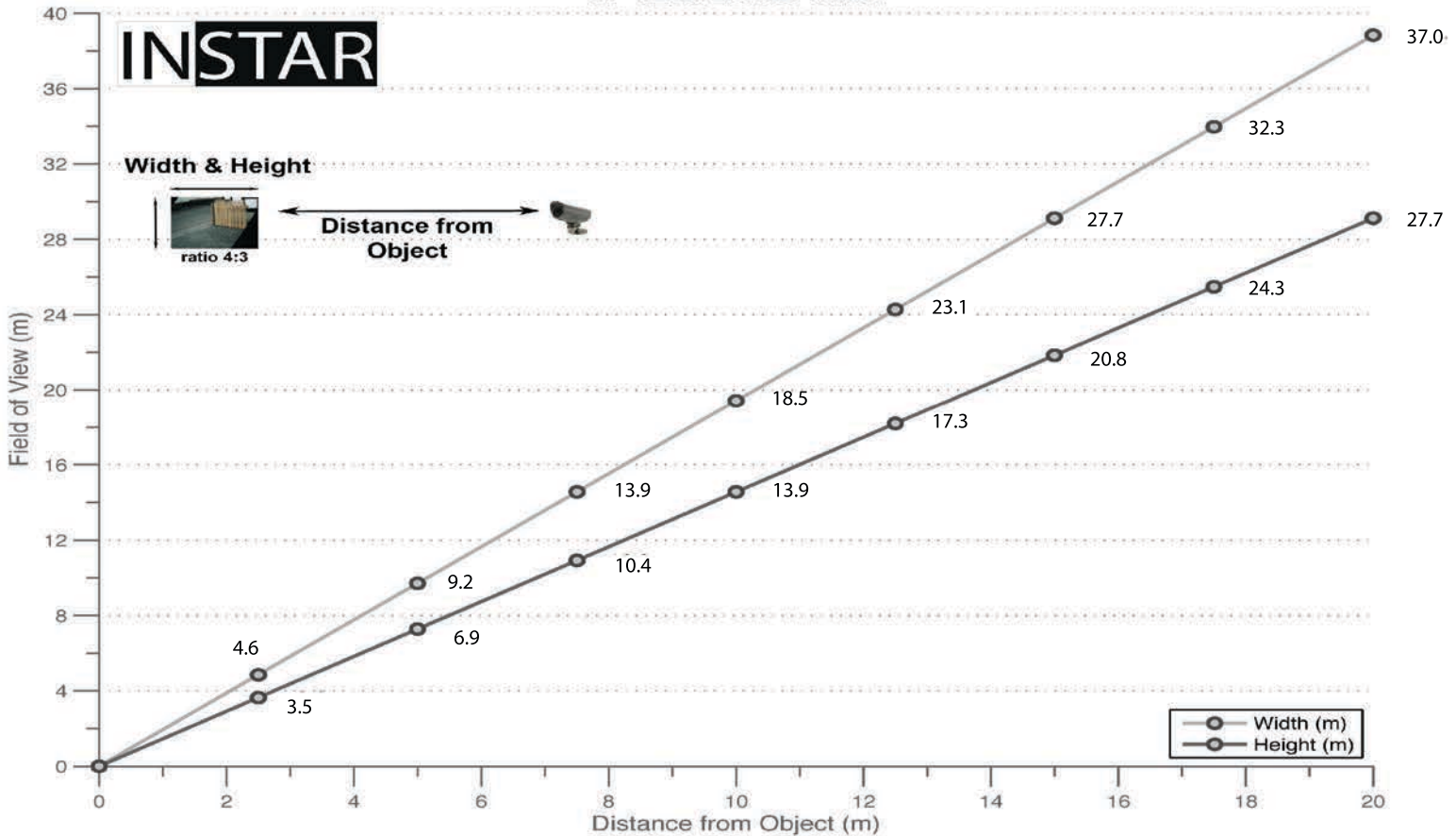
Specifications:

- 1 Sensing Area: 1/5" CMOS; 5,08 mm
- 2 Focal Length: 2.20 mm (f)
- 3 Back Focal Length: 4.49 mm
- 4 F/NO: 2.0
- 5 Iris: Fixed
- 6 Optical Distortion: < -40.3 %
- 7 Lens Construction:
6 Glasses + IR Filter
- 8 Field Angle (D x H x V):
98.2 x 78.7 x 60.7*
- 9 Focus Extent: 20 cm - ∞
- 10 Weight: 6,5 g
- 11 Temperature: -10 - 50°C

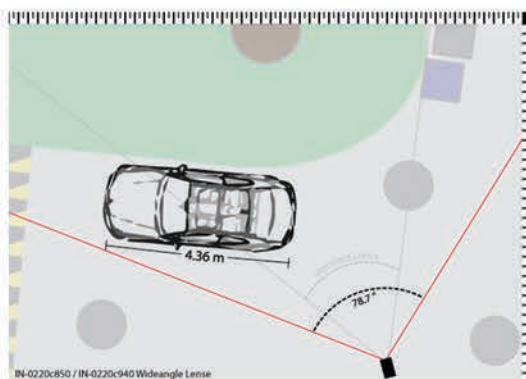


* Diagonal field angle calculated according to: $\phi = 2 \tan^{-1} \left(\frac{50\mu}{f} \right) \times \frac{180}{\pi}$

IN-0220 Lens Chart



IN-0220c850 "without IR filter"



IN-0220c850 / IN-0220c940 Wideangle Lens



IN-0220c940 "with IR filter"