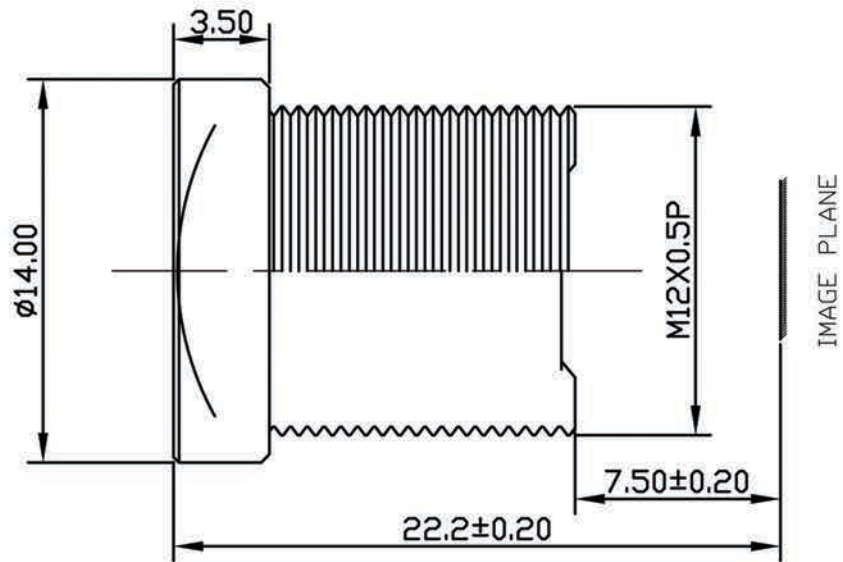


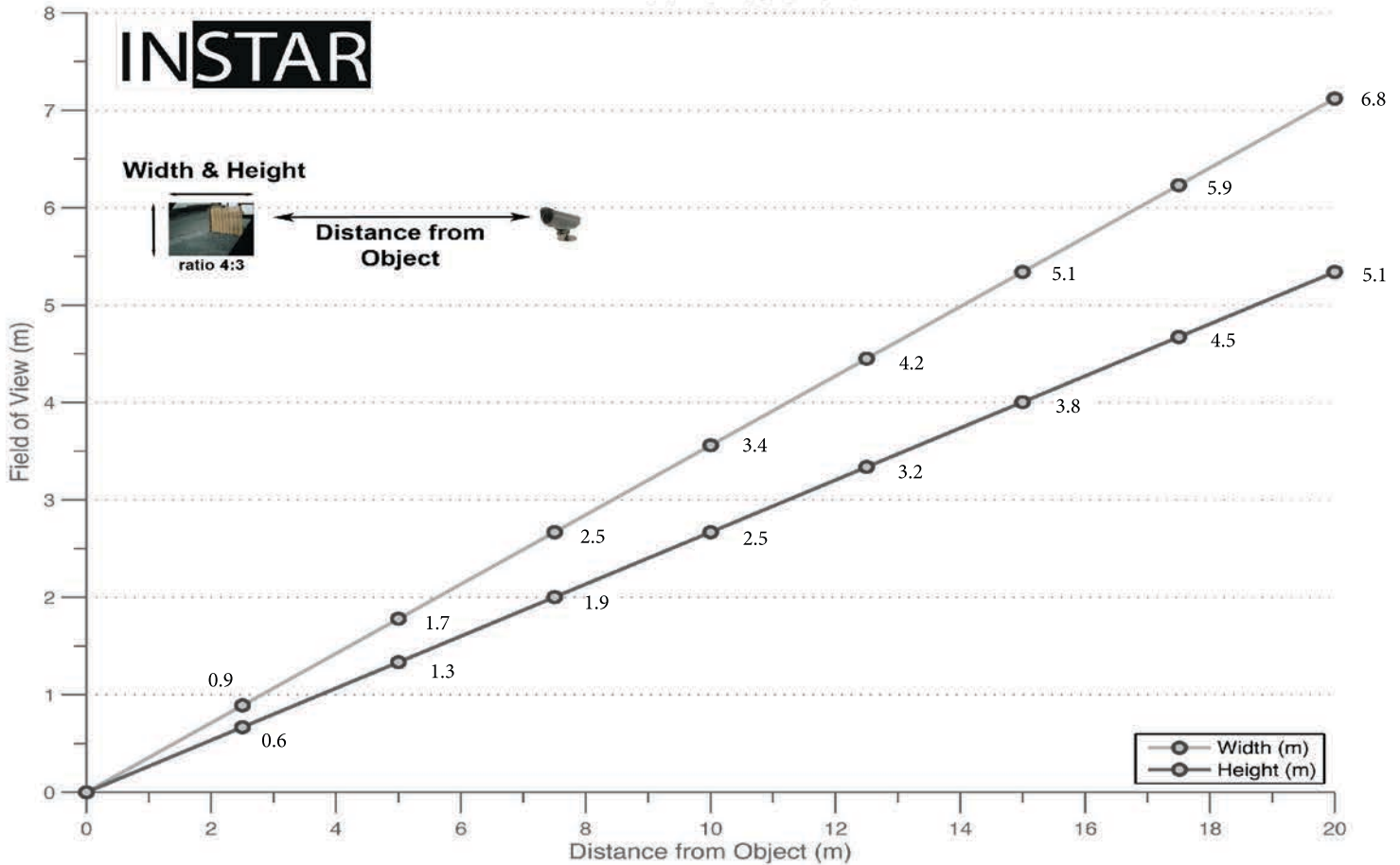
Specifications:

- 1 Sensing Area: 1/5" CMOS; 5,08 mm
- 2 Focal Length: 12.0 mm (f)
- 3 Back Focal Length: 8.0 mm
- 4 F/NO: 1.6
- 5 Iris: Fixed
- 6 Optical Distortion: < -1 %
- 7 Lense Construction:
4 Glasses (+ IR Filter)
- 8 Field Angle (D x H x V):
23.9 x 19.2 x 14.8 *
- 9 Focus Extent: 20 cm - ∞
- 10 Weight: 5,5 g
- 11 Temperature: -10 - 50°C

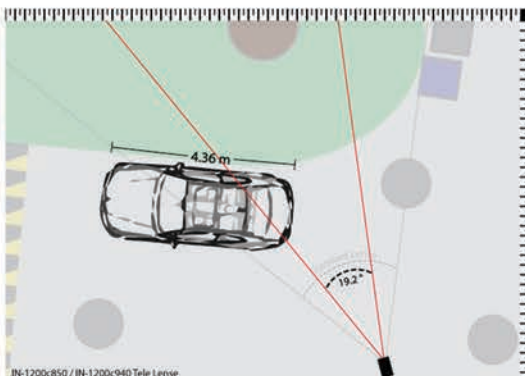


* Diagonal field angle calculated according to: $\phi = 2 \tan^{-1} \left(\frac{5.08}{f} \right) \times \frac{180}{\pi}$

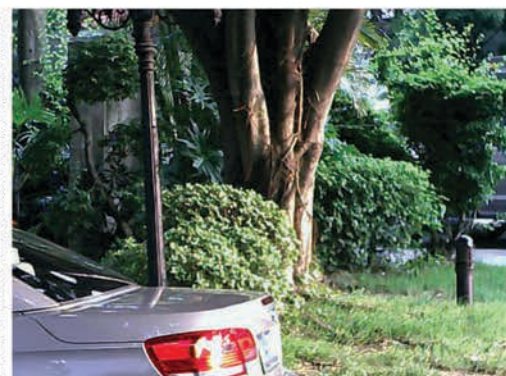
IN-1200 Lense Chart



IN-1200c850 "without IR filter"



IN-1200c850 / IN-1200c940 Tele Lense



IN-1200c940 "with IR filter"