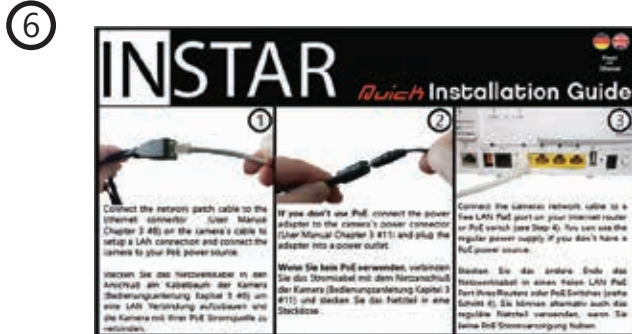
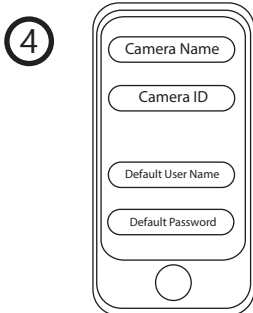


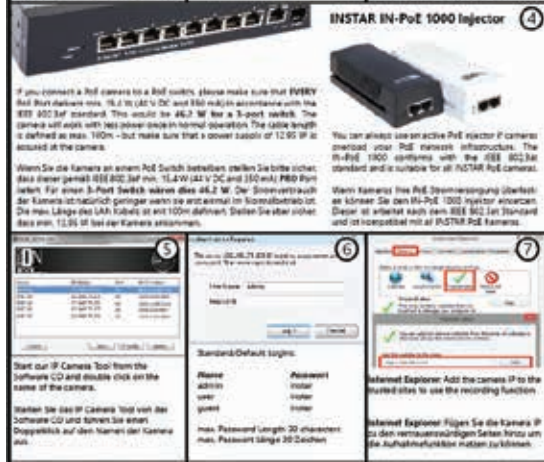
Connect your camera with your PoE power supply via the included LAN cable or plug in the power supply (User Manual Chapter 3 #11) to start the camera.

Start our Android or iPhone app **Instar Vision**. Choose to add a new p2p camera and start the QR code scanner. Your QR code is located on a label on the camera case (s. above). **Or use the automatic search for local cameras.**

Scan the code to add your IN-5907 as a new p2p camera and confirm the settings. If you already changed the camera's admin login, please adjust this in the following dialogue as well.



The QR code contains all the necessary information to add your camera. Please be aware that the default login credentials will be used. If you want to change the default password please check the **Quick Installation Guide**. The password can only be changed in the web user interface.



The app will now connect to your cameras live stream and you will be able to activate the audio stream (needs an external microphone) and to take snapshots.

The wps / p2p method allows you to quickly connect your camera and check the cameras live stream. Please refer to the **Quick Installation Guide** for instruction on how to access additional camera features.

INSTAR



Plug & Play

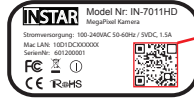
①



ODER



②



③

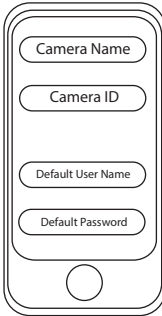


Verbinden Sie die Kamera mit Ihrem PoE Switch oder Injektor oder stecken Sie das Netzteil in die DC Buchse der Kamera (Bedienungsanleitung Kapitel 3 #11) um die Kamera zu starten.

Starten Sie unsere kostenlose Android oder iPhone App **InstarVision**. Wählen Sie das Hinzufügen einer neuen p2p Kamera und starten Sie den QR Code Scanner. Lokalisieren Sie den QR Code auf dem Kameragehäuse (s. Bild o.). **Oder nutzen Sie den automatischen Scanner um die Kamera zu suchen.**

Scannen Sie den Code mit der **InstarVision** Smartphone App und **fügen Sie Ihre IN-5907 als p2p Kamera hinzu.**

④



⑥

INSTAR Quick Installation Guide

① Connect the network patch cable to the Ethernet connector on the camera. (Refer to Manual Chapter 3 #11 on the camera's user manual to setup a LAN connector and connect the camera to your PoE power source.)

② If you don't use PoE, connect the power adapter to the camera's power connector (Refer Manual Chapter 3 #11) and plug the adapter into a power source.

③ Connect the network cable to a PoE switch or a PoE injector. (Refer Manual Chapter 3 #11) and connect the camera to the PoE power source.

④ Connect the camera's network cable to a PoE switch or a PoE injector. (Refer Manual Chapter 3 #11) and connect the camera to the PoE power source.

⑤ If you connect a PoE camera to a PoE switch, please make sure that SWR1 and SWR2 are set to 15.4 W (85 V PoE) and SWR3 is set to 15.4 W (85 V PoE). If you connect a PoE camera to a PoE injector, please make sure that SWR1 and SWR2 are set to 15.4 W (85 V PoE) and SWR3 is set to 15.4 W (85 V PoE). If you connect a PoE camera to a PoE switch, please make sure that SWR1 and SWR2 are set to 15.4 W (85 V PoE) and SWR3 is set to 15.4 W (85 V PoE). If you connect a PoE camera to a PoE injector, please make sure that SWR1 and SWR2 are set to 15.4 W (85 V PoE) and SWR3 is set to 15.4 W (85 V PoE).

⑥ Start up IP-Camera Tool from the software CD and double click on the name of the camera.

⑦ Start up IP-Camera Tool from the software CD and double click on the name of the camera.

Der QR Code beinhaltet alle Informationen zum Einbinden der Kamera. Bitte beachten Sie, dass hierbei die Standard Login Daten verwendet werden. Das Standard Kennwort kann nur über die Weboberfläche der Kamera geändert werden (s. 9).

⑤



Die App wird jetzt den Live Stream der Kamera abgreifen können und Ihnen die Möglichkeit geben den Audiostream eines externen Mikrofons zu aktivieren und einen Schnappschuss zu speichern.

Die p2p Funktion ist ein einfacher und schneller Weg sich mit der Kamera zu verbinden. Wenn Sie weitere Funktionen der Kamera nutzen möchten, lesen Sie bitte in der **Schnell-Installationsanleitung** weiter.